

Belgian steel in figures

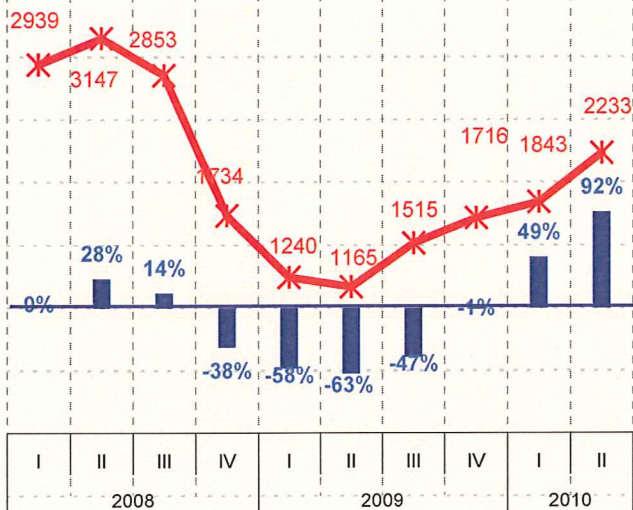
source: GSV / Worldsteel

Crude steel (ktm and % y-o-y)

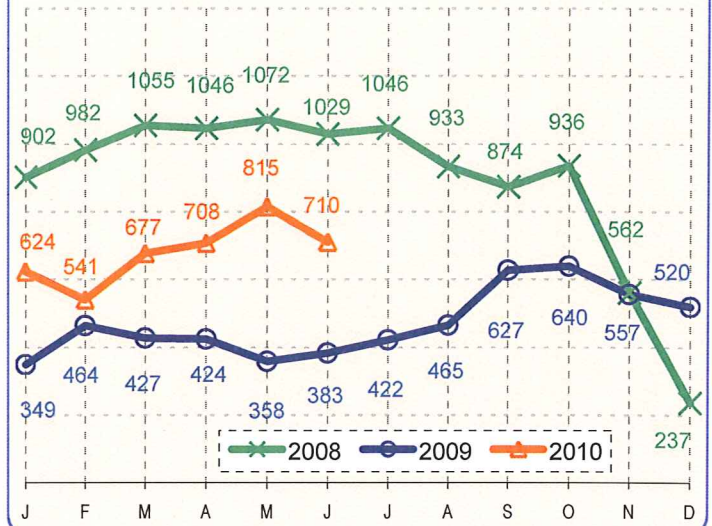
GSV / Worldsteel

	2007	2008	2009	Apr 10	May 10	Jun 10	2008	2009	I/10	II/10	Jun 10
	ktm	ktm	ktm	ktm	ktm	ktm	% yoy	% yoy	% yoy	% yoy	% yoy
Belgium	891	889	470	708	815	710	0%	-47%	-1%	49%	92%
Germany	4046	3820	2723	3882	4073	3856	-6%	-29%	4%	50%	80%
France	1604	1490	1070	1451	1573	1457	-7%	-28%	14%	27%	53%
Italy	2626	2548	1643	2352	2471	2264	-3%	-36%	-15%	31%	44%
UK	1193	1127	840	839	808	794	-6%	-25%	18%	22%	7%
EU27	17473	16474	11580	15401	16459	15231	-6%	-30%	7%	39%	49%
USA	8182	7613	4850	6955	7264	7199	-7%	-36%	14%	64%	74%
China	40770	41707	47320	55403	56143	53766	2%	13%	34%	24%	18%
World	111980	110481	101955	122167	126221	120382	-1%	-8%	22%	28%	27%
BRIC	54027	54814	59542	69100	70414	67396	1%	9%	32%	24%	19%

Belgium: production (kt and % y-o-y)



Belgium: production (ktm)



Production (kt and % y-o-y)

GSV

	2005	2006	2007	2008	2009	I09	II09	III09	IV09	I10	II10
Hot rolled coils	9427	10704	9442	9980	5925	1384	1272	1536	1732	2159	2362
	-17%	14%	-12%	6%	-41%	-52%	-58%	-43%	26%	56%	86%
Cold rolled	4995	5819	4910	3999	3239	601	689	857	1092	1273	1293
	-12%	16%	-16%	-19%	-19%	-41%	-46%	-23%	80%	112%	88%
Coated sheets	3906	4618	4381	4140	3054	646	685	776	947	1001	1049
	-11%	18%	-5%	-6%	-26%	-44%	-43%	-30%	43%	55%	53%
Plates	814	797	768	741	402	125	101	74	102	122	162
	0%	-2%	-4%	-4%	-46%	-33%	-53%	-54%	-43%	-2%	60%
Wirer rod	794	983	970	878	723	173	219	162	170	216	211
	-11%	24%	-1%	-9%	-18%	-39%	-18%	27%	-14%	25%	-4%
Stainless steel	1032	1522	1521	1471	1045	236	242	291	276	353	393
	-1%	47%	0%	-3%	-29%	-49%	-46%	-8%	14%	50%	62%